



EL SOL, JUPITER'S NEIGHBORHOOD RESOURCE CENTER FIRST QUARTERLY REPORT 2013

Table of Contents

I.	Letter to the Town	2
II.	Programs	
1.	Labor	3
a.	Workers Statistics	
b.	Employers Statistics	
2.	Education	4
a.	English for Speakers of Other Languages	
b.	Spanish Literacy	
c.	Spanish Classes for English Speakers	
d.	Vocational Training	
e.	Computer Literacy	
f.	“Meet the Worker” program	
3.	Legal	9
4.	Community Service	10
5.	Health	11
a.	Referrals and Education	
b.	Jupiter Volunteer Clinic	
6.	Food	13
a.	Hot Meal Program	
b.	Food Pantry	
7.	Personal Counseling	14
a.	Guatemala Maya Center	
b.	Te Escucho	
c.	Victim’s Services	
8.	Volunteers, Vistas and Interns	15
III.	Value of Services	16

April 1st, 2013

Dear Town of Jupiter Council Members,

As part of its lease with the Town, El Sol is pleased to submit its first quarterly report for 2013.

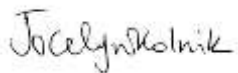
Highlights

Labor	A total number of 2,297 jobs were filled this quarter. This is an 11% increase from last year’s first quarter. After breaking our all-time records in 2012, we are still moving upwards in employment.
Education	This quarter, an average of 58 students attended our Night ESOL classes, and an average of 44 attended our Daytime ESOL courses. 11 students participated in our Adult Literacy (Plazas) program, as well as 11 in our computer literacy program on average. Graduation for this semester was held April 10 th , 2013.
Community Service	This quarter El Sol workers volunteered a total of 76 of hours, valued at \$1,683.
Legal	Our volunteer attorneys and legal assistants took 104 cases.
Health	Health Coordinator referred 298 to health services. We also hosted 12 separate workshops on health and prevention reaching 356 individuals, and the clinic took 98 appointments.
Food	El Sol’s Hot Lunch program provided 5,093 meals to workers, an average of 58 meals a day. Also, the Food Pantry provided food to 726 individuals in this quarter alone.
Personal Counseling	El Sol’s personal counseling programs have helped 132 this quarter. Victim’s Services had 53 appointments at El Sol.
Special Events	El Sol participated in Jupiter Police Department’s first Annual Soccer Tournament, in addition to holding our Annual Health Fair.
Value of Services	El Sol contributed services with an estimated value of \$307,805, monthly average \$102,601.67.

We are proud to share the development of our programs and the positive impact they are having in Jupiter. The impact of our programs and services is detailed here, and when appropriate, there is a comparison to previous years’ statistics. According to the Florida Governor’s Commission on Volunteerism and Community Service’s sources, the value of volunteer contributions is estimated at \$22.14 per hour. This is the amount we assign to calculate the value of volunteer hours in our programs. We have changed our reports to reflect our audits, now omitting staff salaries and including professional volunteer time valued at their average rate of pay.

If you have any questions or comments please feel free to contact me.

Respectfully submitted by,



Jocelyn Skolnik
Executive Director

II.PROGRAMS

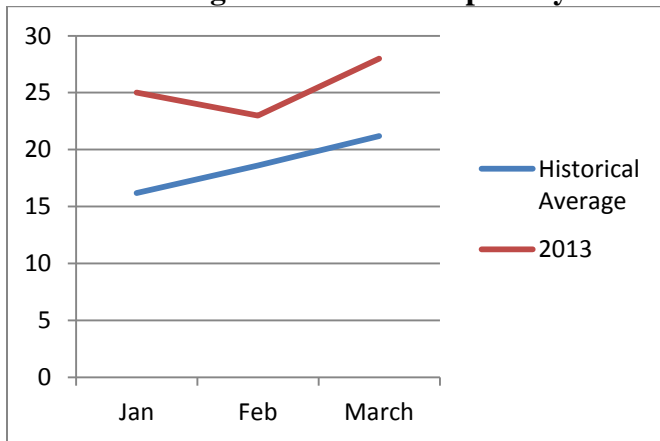
1. LABOR PROGRAM

a. Workers Statistics:

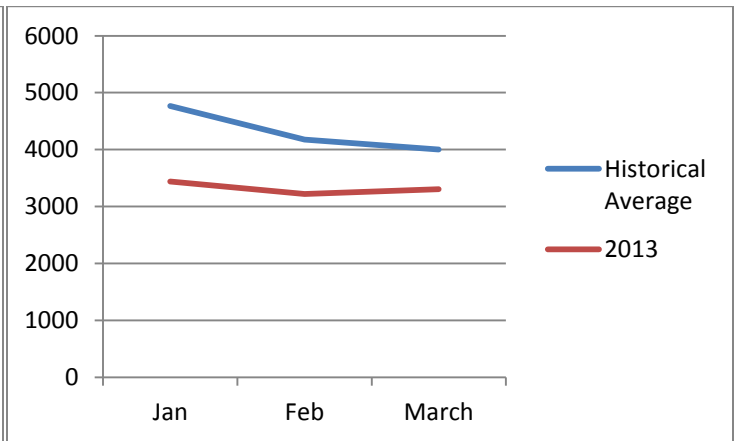
A total of 2,824 workers are registered with El Sol as of April 1st, 2013. This quarter an average 111 workers registered for work each morning. A total of 2,297 workers were hired in the first quarter of 2013, an 11% increase from 2012's first quarter. An average of 16 workers hired each day, at daily placement rate of 23%.

Quarter I 2013		
	Historical Average	2013
Worker Attendance	12,946	9,966
Average Worker Attendance	144	111
Workers Hired	1,685	2,297
Average Workers Hired	18.7	25.3
Daily Placement Rate %	13.6	23

Average Workers Hired per day



Worker Attendance



* To consolidate data we have calculated a “historical average” from 2008-2012 data. We will continue to compare the “historical average” with current year data for simpler analysis.

b. Employers Statistics

A total of 6,639 employers are registered with El Sol as of April 1st, 2013.

Quarter 1 2013		
	Historical Average	2013
New Employers	259	249
Employer Attendance	1,057	1,448

Value of Labor Program	
	Quarter I
Volunteer Hours (506.3)	\$11,210
Total	\$11,210



Workers council members cleaning up the kitchen

2. EDUCATION

a. English for Speakers of Other Languages (ESOL)

Daytime English Classes

English classes are offered Tuesdays and Thursdays from 9AM – 11AM. Our classes focus on the “Staying Healthy” curriculum provided by the Florida Literacy Coalition. The “Staying Healthy” curriculum is an English learner’s guide to American healthcare and healthy living. Classes cover basic conversational skills, and focus on vocabulary building activities and grammar with emphasis on healthcare. Also, on Monday mornings from 9-11 AM, we offer English classes for an average of 15 women. The classes cover lessons on women’s health from the “Staying Healthy” curriculum.

This quarter, 1,110 workers attended daytime ESL classes; on average 44 students participated per class day.

Value of Daytime ESOL Program	
	Quarter I
Professional ESOL Hours (24.9)	\$615
Volunteer Hours (461.6)	\$10,220
Total	\$10,835

Nighttime ESOL program

El Sol partners with the Harriet L. Wilkes Honors College of Florida Atlantic University (FAU) and Palm Beach State College (PBSC) to offer ESOL classes three nights per week from 7PM – 9PM. Some volunteers also provided 58 hours of childcare at night for parents who would otherwise be unable to attend class. This quarter, on average 58 students attended class each night a 16% increase in attendance from previous years. Graduation was held April 10th and 27 students graduated.

El Sol has also started a new night time tutoring class for students. A total of 30 students attended the new program, in which 5 volunteers helped guide them in their studies. We also offered the “Read-A-Recipe for Literacy” program which promotes children’s literacy, in which 11 students participated.

Month	Overall Attendance	Average Attendance	Students Promoted	# of Volunteers
	2013			
Jan	236	79	0	34
Feb	669	56	0	37
Mar	447	38	27	41
Totals	1,352	58	27	112

Value of Nighttime ESOL Program	
Quarter I	
Volunteer Hours (644.6)	\$14,271
Total	\$14,241

*On average 37 volunteers teach our nighttime classes.



Workers participated in a special Dr. Martin Luther King Jr. history lesson with guest speakers Dr. Strain & Dr. Fernandez

b. Spanish Literacy – Plazas Comunitarias

Plazas Comunitarias is an adult basic education program organized by the Mexican National Institute of Adult Education (INEA) that provides Spanish speakers with the opportunity to learn to read and write and to complete elementary, middle and high school education.

This year we expanded this program and hold classes both in the morning and evenings. Community members teach these classes on Thursdays and Fridays from 7 – 9 PM, and Tuesdays and Thursday mornings from 9-11 AM.

An average of 11 students participated, an increase of 83% from previous years when 6 people attended on average. One student this semester graduated with his High School diploma.

Quarter I 2013		
	Historical Average	2013
Average Attendance	5.67	11

Value of Nighttime Literacy (Plazas Comunitarias) Program	
Quarter I	
Volunteer Hours (100)	\$2,214
Total	\$2,214

c. Spanish Classes for English Speakers

Averages of 11 community members meet every Friday afternoon to learn Spanish. The class is taught by a registered worker who has mastered his English proficiency and is now able to teach Spanish to English speakers. The class has concentrated on basic grammar rules and vocabulary building activities.



Shown left is El Sol’s Intermediate Spanish Class. This year we have seen nearly double the number of students attending class on a regular basis.

Spanish for English Speakers	
Quarter I	
Volunteers (13.5)	\$299
Total	\$299

d. Vocational Training

One of our successful and ongoing vocational training programs is our sewing program. The objective of the El Sol’s sewing classes, Cosiendo Un Sueño, is to provide real life marketable and income-generating sewing skills. Five volunteers assist eight students to improve their sewing skills. Students have learned how to do alterations and how to create products such as bags and crafts.



This Quarter we started teaching “Soft Skills”, a program organized by the U.S. Department of Labor, in our Vocational training.

Sewing	
Quarter I	
Volunteer Hours (329.9)	\$7,306
Total	\$7,306

Month	Vocational Training	Attendance
Jan	Sewing	12
Feb	Carpentry	7
Feb	Cooking	15
Feb	Sewing	12
Feb	Soft Skills	43
March	Soft Skills	27
March	Sewing	12
TOTAL		128



Workers learn measurement skills in a Carpentry Vocational Training workshop.

e. Computer Literacy- Nighttime Computer Skills Class

Computer classes introduce students to basic computer skills such as using Microsoft Word and PowerPoint. It helps students understand how the internet works, how to read and summarize news from the internet, find locations and directions, do research and compare prices using the internet, and information about how to find local resources and services. Students also learn how to use websites to find jobs and places to rent.

This quarter we were awarded a grant from The Lost Tree Village Foundation to create an entirely new computer lab for our students which includes new computers, a projector, and other teaching tools. We are confident that this improvement in infrastructure will make an even greater benefit on our student’s level of computer literacy.

This quarter a total of 11 students participated on average in our classes.

Month	Attendance	Average Attendance
	2013	
Jan	28	14
Feb	93	11
Mar	64	8
Total	185	11

f. “Meet the Worker” Program

Integration is a cornerstone of our mission; the “Meet the Worker” program is a new initiative that seeks to build bridges of communication and understanding between local high school students and our workers. We carry out the program through bringing in high school students, who learn about El Sol and the workers while practicing their conversational Spanish skills.

A group of 12 students from the Pine School initially visited El Sol on October 24, 2012. The program was such a success with the students that 25 students attended this quarter. All of the students came prepared with questions to put their Spanish language skills into practice and interviewed different workers for an hour. Each student wrote an essay to reflect on their experience and expressed how much they had learned. Both workers and students enjoyed this opportunity as they learned from each other and shared experiences.

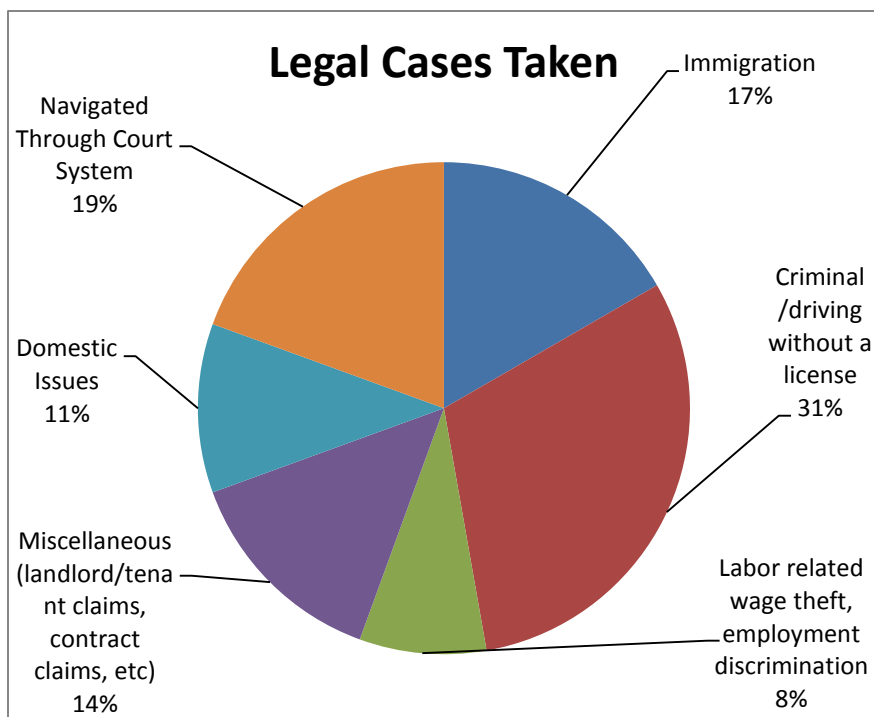


3. LEGAL

During the first quarter of 2013, one volunteer attorney, assisted by a legal assistant handled a total of 104 cases. In addition, our volunteer attorney provided assistance in certain on-going matters, assisted El Sol members with family members in detention, attended meetings with various public officials and spoke to different groups to raise awareness. The cases reflect the more dangerous and difficult atmosphere for immigrants of our community over the past year. El Sol attorneys take pro-bono labor cases and refer those coming to seek assistance with other legal questions.

a. Case Areas

Number of Cases Taken				
Category	Jan	Feb	Mar	Total
Immigration	6	13	14	33
Criminal /driving without a license	11	4	5	20
Labor related (wage theft, employment discrimination)	3	3	3	9
Miscellaneous (landlord/tenant claims, contract claims, etc)	5	2	7	14
Domestic Issues	4	5	2	11
Navigated Through Court System	7	6	4	17
Total	36	33	35	104



El Sol also continues to raise awareness about rights and responsibilities of people in the United States, holding one workshop at El Sol this quarter which offered information on the recent Immigration Reform.

Month	Workshops	Speaker	Attendance
March	Immigration	Isabel Castillo, Esq	40

Volunteer attorneys (valued at \$300/hr) contributed 86.35 hours.

Value of Legal Assistance Program		
	Quarter I	Total
Attorneys	\$16,905	\$16,905
Total	\$16,905	\$16,905

4. COMMUNITY SERVICE AND ENGAGEMENT

El Sol is proud to coordinate community service events with community partners. The photos below show three of our registered workers volunteering in the Abacoa Community Garden, and El Sol Participating in Jupiter’s First Annual MLK Day Parade.



This quarter, El Sol workers have volunteered for a total of 76 hours, valued at a contribution of \$1,683.

Community Service 2013					
Date	Name of Event/Partner	# of Participants	Hours	Total Hours	Value of Contribution
Jan	Abacoa Community Garden	4	4	16	\$354
Feb	Paint Your Heart Out	11	4	44	\$975
March	Paint Your Heart Out	4	4	16	\$354
Total		19	12	76	\$1,683

5. HEALTH

a. Referrals and Education

The Health Program provides education on common health issues relevant to the immigrant and day laborer community of Jupiter. This quarter, our health coordinator successfully helped a total of 298 individuals with their health needs by referring them to the right resources. The following chart summarizes the activities performed by category:

Service	Jan	Feb	Mar	Quarter TOTAL
General Health	32	31	16	79
Service Referral	33	3	46	82
Dental	15	8	10	33
Hearing	3	0	0	3
Vision	6	10	6	22
VNA	18	0	15	33
Other	0	46	0	46
TOTAL	107	98	93	298

Our health education efforts this quarter were very successful, with 356 participants learning about different health and prevention topics at 12 separate events.

Month	Workshop Topic	# of Participants
Jan	Oral Health	54
Jan	Living Wills with Hospice of Palm Beach County	60
Jan	Diva Cups	9
Jan	OSHA Trenches & Scaffolds	16
Feb	Sun/Skincare	12
Feb	Nutrition	6
Feb	Parenting	12
Feb	OSHA Silent Hazards	15
March	Health Fair: Health & Wellbeing	66
March	Parenting an Educational Play	6
March	Parenting for Dads	25
March	Bed Bugs	75
TOTAL		356

This year we have also begun a new leg of our Health program at El Sol: Promotores de Salud, a program designed by the U.S. Department of Health and Human Services, Office of Minority Health. El Sol workers, trained by the Rural Women's Health Project, promote health topics in the community on a monthly basis. This quarter, the Promotores de Salud reached 106 members of the community to establish health issues of concern and educate the community about Diabetes.

Month	Number of Contacts	Subject
Jan	Program Began	Introduction to the program
Feb	60	Finding issues of concern
March	46	Finding issues of concern



This Quarter we held our Annual Health and Wellness Fair at El Sol. 66 Community Members attended.

b. Jupiter Volunteer Clinic

The Jupiter Volunteer Clinic is a joint venture between El Sol, the Town of Jupiter, Jupiter Medical Center, Quantum Foundation, and the Palm Beach Health Department.

The Health Department provides the building facility and clerical staff on Saturdays, while El Sol provides the management team and scheduling of volunteer staff. This quarter the clinic has assisted 98 individuals.



Month	# Seen	Amount
Jan	39	\$5,403
Feb	35	\$4,671
Mar	24	\$5,975
TOTAL	98	\$16,049

Value of Health Program	
Quarter I	
Volunteer	\$1,284
Clinic Value of Services	\$24,019
Total	\$25,303

6. FOOD

El Sol offers two different Food Assistance programs to the community.

a. Hot Meal Program

Every day El Sol provides coffee and pastries for breakfast, and a hot meal for lunch to those waiting for day labor. This is possible with the help of our volunteers and donations from various local businesses and organizations including Publix, Jupiter First Church, Temple Beth Am, St. Peter’s Catholic Church, Mariner Sands, JL Cares, and more.

This quarter we served a total of 5,093 meals with an average of 58 meals per day. Volunteers contributed 3,080 hours to this program.

Quarter I 2013		
	Historical Average	2013
Total Lunches Served	10,198	5,093
Average Meals Served per Day	114.2	58



Pictured left is a photo from our SafeServ (safe food handling) course that kitchen volunteers participated in. This course also provided workers with certification to work in restaurants, furthering their opportunity for employment.

b. North Palm Beach Food Pantry

El Sol hosts C.R.O.S. Ministries’ North County Food Pantry Tuesdays and Fridays from 2:00 – 4:00PM. The most common listed reason for need was loss of employment.

This quarter the Pantry served 726 individuals, an average of 242 per month.

Month	People Served	Value	Vol. Hrs
Jan	275	\$3,640	97
Feb	224	\$3,623	97.5
Mar	227	\$8,136	92.5
Total	726	\$15,399	287

This quarter the value of our food program was \$99,906.

Value of Food Program	
	Quarter I
Hot Meals (@ \$3/meal)	\$15,279
Food Pantry, food	\$15,399
Professional Chef Hours (45.5)	\$1,019
Volunteers (3080.8)	\$68,209
Total	\$99,906

7. PERSONAL COUNSELING

a. Guatemala Maya Center

This quarter, El Sol helped a total of 113 cases and channeled their needs to the proper agencies. The Guatemalan-Maya Center has provided weekly assistance for families at El Sol. A case manager visits El Sol, Jupiter’s Neighborhood Resource Center, and helps families in need of services such as Medicaid, Florida Kid Care, WIC, Immunizations, and the administration of Ages and Stages Questionnaires to help identify children with developmental concerns.

b. “Te Escucho” Program

“Te Escucho” (I Listen to you) program is a peer to peer listening program where volunteers have been trained to address the needs of a community in distress and to help them overcome problems, whether personal, social or family related. This year, this program began being by referral only. In this quarter 5 people have been assisted by this program.

c. Sister Marta

In addition, Sister Marta Tobón, a Guadalupan sister from St. Peter's Catholic Church assists many El Sol workers with her guidance. She assisted 21 people this quarter.

d. Victims Services

Victims Services is a mental health counseling program sponsored by the Palm Beach County Board of County Commissioners Public Services Department Victim Services Division. A victim advocate visits El Sol every Wednesday from 2-4 PM to assist individuals. Men are assisted with mental health to help with dealing with being victims of a crime. Women are also offered mental health assistance to help cope with being victims of domestic violence. This program had 53 appointments this quarter.

Month	Guatemalan Mayan Center	Sr. Marta	Te Escucho	Victims Services	Total
Jan	46	9	2	18	75
Feb	35	6	1	15	57
Mar	32	6	2	20	60
Total	113	21	5	53	192

Value of Personal Counseling Program	
Quarter I	
Guatemala Mayan Center	\$2,347
Sister Marta	\$930
Te Escucho	\$221
Total	\$3,498

9. VOLUNTEERS, VISTAS AND INTERNS

The total number of volunteer hours this quarter is 6,682 valued at \$227,423. Many of those hours are accounted for in the different programs described in this report. The rest of the hours are contributed by volunteers that provide administrative and technical support; help register new workers; provide referrals; welcome employers; assist with special events and committees; write grants and develop strategies, and much more. Their contributions are summarized under the category “Other”. The total number of volunteer hours contributed for operations that are not otherwise mentioned in this report were: 1,048 hours (“other”).

El Sol has hosted two interns this quarter from Florida Atlantic University Honors College: Ana Rodrigues and Alayia Dewji. They have assisted us with conducting worker surveys, community service, program evaluations, program support, and grant writing.

El Sol had 5 AmeriCorps VISTA volunteers this Quarter, helping to build capacity. These volunteers work full-time and receive a stipend from the U.S. Government for their service. Positions include: Job Developer, Volunteer Developer, Vocational Training Developer, & Community Resource Developer.

Value of Volunteers, Vistas and Interns Program	
	Quarter I
Volunteers (Other 1,048)	\$23,203
Volunteers (Professional Other 340.6)	\$16,447
Interns	\$3,786
VISTA	\$46,937
Total	\$90,373



El Sol volunteers were recognized at our annual Volunteer Recognition Ceremony held in February.

III. VALUE OF SERVICES

This quarter El Sol contributed services with an estimated value of \$307,805. Monthly average: \$102,601.67.

Program	Quarter I
Labor	\$11,209
Daytime ESOL	\$10,835
Nighttime ESOL	\$14,271
Spanish Literacy	\$2,214
Spanish Classes	\$299
Vocational Training	\$7,306
Computer Literacy	\$1,633
Community Service	\$1,683
Legal	\$16,905
Health	\$25,303
Food	\$99,906
Personal Counseling	\$3,498
Volunteers (Other)	\$39,650
Interns	\$3,786
VISTAS	\$46,937
Admin Staff	\$22,370
Total	\$307,805

